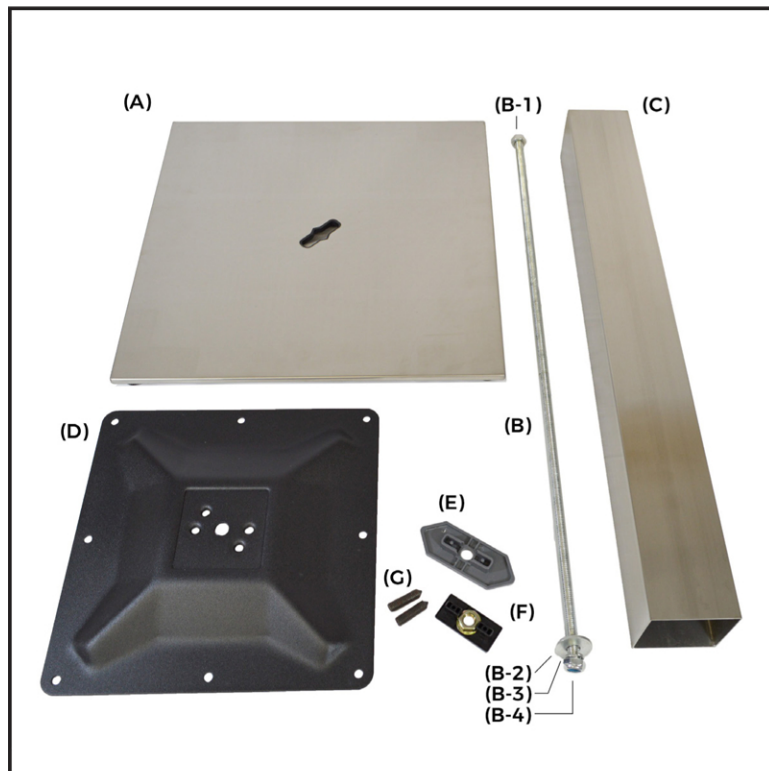




TABLE BASE ASSEMBLY

Stainless Steel - Square Style Bases



Part List:

- A- Base Plate
- B- Connecting Rod
- B-1 - M12 Hex Nut
- B-2 - Flat Washer
- B-3 - Lock Washer
- B-4 - M12 Self-Locking Hex Nut
- C- Column
- D- Top Plate
- E- Lower Column Alignment Clip
- F- Bottom Clip
- G- Alignment Screws

Instructions:

- Step 1** - Insert the lower column alignment clip (E) into the top of the base plate (A) and the bottom clip (F) into the bottom of the base plate and press them together.
- Step 2** - Thread the connecting rod (B) into the base assembly making sure it threads completely through but does not touch the floor. Tighten the hex nut (B-1) as shown below.
- Step 3** - Slide the column (C) over the rod. Make sure the rod comes through the center hole inside the column bracket as shown in step 5. The column should fit over the lower alignment clip (E) and sit flat on the base plate.
- Step 4** - Install the upper column alignment Screws (G) into the top mounting plate (D) in the two holes that run from corner to corner.
- Step 5** - Slide the top plate assembly over the rod. Make sure the upper alignment screws fit into the bracket inside the column and the top plate sits flush on the column.
- Step 6** - Slide the flat washer (B-2) and lock washer (B-3) over the rod and tighten with the self-locking nut (B-4).

You are now ready to mount your table top!

